

# Skinning Machine

V1558 & V1658



# Skinning Machine

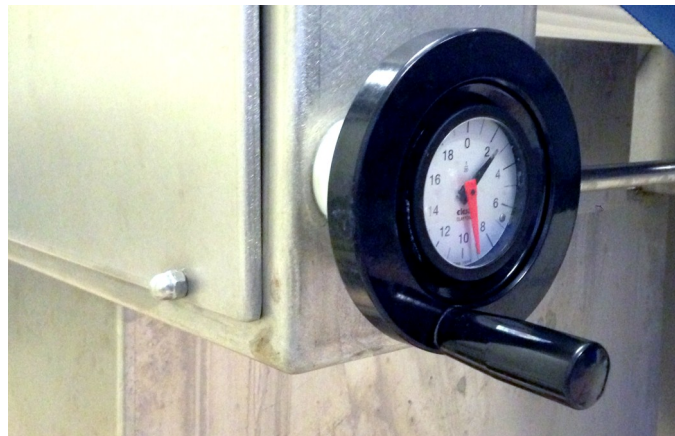
## V1558 & V1658

### PRODUCT INFORMATION

This Skinning Machine is designed for all types of fillets. The skinning options ranges from silver, traditional to deep skinning of salmon fillets, pre and post rigor. The machine has two pressing rollers, one for the right and one for the left side of the fillet, making it possible to process two fillets at the same time. Both models can be purchased with only one pressing roller for processing one fillet at the time. This model has a handle that enables the user to change the skinning depth quick and easy.

### ADVANTAGE

- If needed, the machine can work with two fillets at the same time.
- The skinning thickness can be adjusted.
- The machine is easy to operate.
- It is easy to clean.



*The handle enables the operator to change the skinning deep quick and easy.*



*Silver skinning*



*Traditional skinning*



*Deep skinning*

### TECHNICAL DATA

#### V1558

|                        |                      |
|------------------------|----------------------|
| Capacity:              | Up to 50 fillets/min |
| Working range, length: | 250 - 650 mm         |
| Working width:         | 488 mm               |
| Water consumption:     | 11 l/min             |
| Height, infeed belt:   | 850 mm               |
| Speed, infeed belt:    | 17 m/min             |
| Height, outfeed belt:  | 731 mm               |
| Speed outfeed belt:    | 35 m/min             |
| Power connection:      | 3x230 V/50Hz         |
| Power consumption:     | 1,2 kW               |
| Noise level:           | 65 Db (A)            |

#### V1658

|                        |                      |
|------------------------|----------------------|
| Capacity:              | Up to 50 fillets/min |
| Working range, length: | 250 - 650 mm         |
| Working width:         | 595 mm               |
| Water consumption:     | 11 l/min             |
| Height, infeed belt:   | 850 mm               |
| Speed, infeed belt:    | 17 m/min             |
| Height, outfeed belt:  | 731 mm               |
| Speed outfeed belt:    | 35 m/min             |
| Power connection:      | 3x230 V/50Hz         |
| Power consumption:     | 1,2 kW               |
| Noise level:           | 65 Db (A)            |

