

PISCES FISH MACHINERY, Inc.

FS-8000 Fillet Splitting Machine

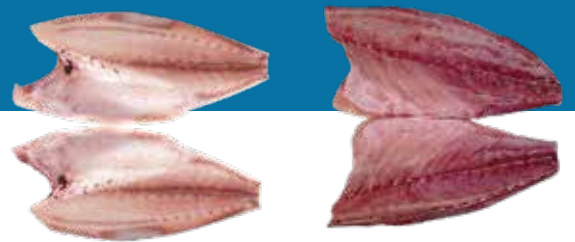
The FS-8000 is reliable, versatile, high-yield filleting units specially designed for the production of ribs in single fillets free of backbone.



METHOD OF OPERATION

Head-off gutted fish is fed onto the feed guide, then the fish is transported by drive belts to three sets of blades which remove the backbone and ejected out of the bottom of the machine. Fillets exit at the outfeed of the machine.

**SPECIFICALLY DESIGNED
TO PRODUCE RIBS IN FILLETS
FROM FISH IN THE SIZE RANGE;
FROM 1 KG TO 7 KG UP TO 25 FISH / MINUTE
DEPENDING ON THE SPECIES.**



KEY FEATURES

- High yield and production rates
- Open hygienic design
- Gentle fish handling
- Easy to operate and maintain
- Low operating and maintenance costs
- Robust design
- Small footprint
- Easy and fast adjustment for different fish size

WIDE RANGE OF SPECIES

Tuna, corvina and other similar species

**HIGH YIELD FILLET
SPLITTING MACHINE**

piscès-ind.com






mm	A	B	C
FS-8000	3176	1089	2027

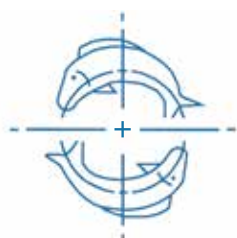
These are indicative values.

Detailed drawings are available on request.

Exclusively Devoted to the Fish Processing Industry

Utilities	
	Standard Garden Hose Connection 1/2 3.8 Liters/minute (1 US gallon/minute)
	Per customer specifications, single or three phase available 7.7 Kw (10.5 Hp)
	1

Specifications subject to change without notice. This machine is subject to U.S. and International patents and meet all CE machine directives.



**PISCES FISH
MACHINERY, Inc.**

7036 US HIGHWAY 2 41 M35

GALDSTONE, MICHIGAN 49837

TEL: 906/789-1636,

E-MAIL: pisces@pisces-ind.com

WEB: www.pisces-ind.com